

October 2020, Kottlingbrunn/Austria

## PRESS RELEASE

WITTMANN BATTENFELD Highlights 2020 – IMAGOxt

### IMAGOxt – additional module for TEMI+

ESG (Environment Social Governance) criteria are becoming more and more important at present and in future. One driving force behind it is the Green Deal of the EU, which is incorporating sustainability considerations into its financial policy framework. For companies this will translate into further efforts to minimize their energy consumption and therefore their CO<sub>2</sub> footprint. However, before the right actions for energy efficiency improvements can be taken, one important question needs to be answered: **How efficiently is my company using energy right now?**

WITTMANN BATTENFELD is introducing a new tool to visualize and monitor the energy consumption and flows within a company. The new software module is called **IMAGOxt** and is perfectly optimized to interact with the MES solution TEMI+. It deals with energy consumption and much more!

This new **IMAGOxt** package will allow users to:

- Calculate a detailed energy **cost analysis** of the company
- Create **customized KPIs**
- Create personalized **reports** and **alarms**,
- Control the company's **energetic performance**.

IMAGOxt is able to collect data from a wide network of metering systems installed in the company and interact directly with TEMI+. By processing this information, the software provides analyses, graphs, reports and meaningful KPIs.

Thanks to its intuitive graphic visualizations, **IMAGOxt** will make it easy for operators to understand their energy consumption trends and immediately detect sources of waste and improvement potentials.

This enables company staff to evaluate new corporate procedures and energy efficiency interventions more accurately, to estimate payback periods and make strategic decisions based on real data.

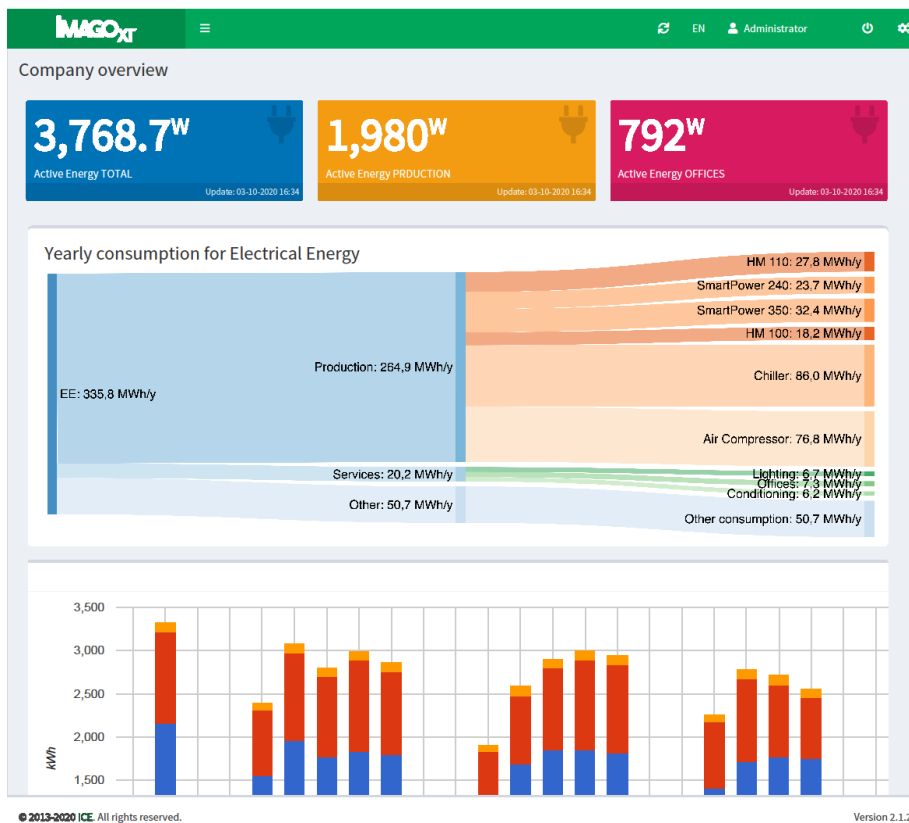


Fig. 1: Personalized Dashboard – Company Overview

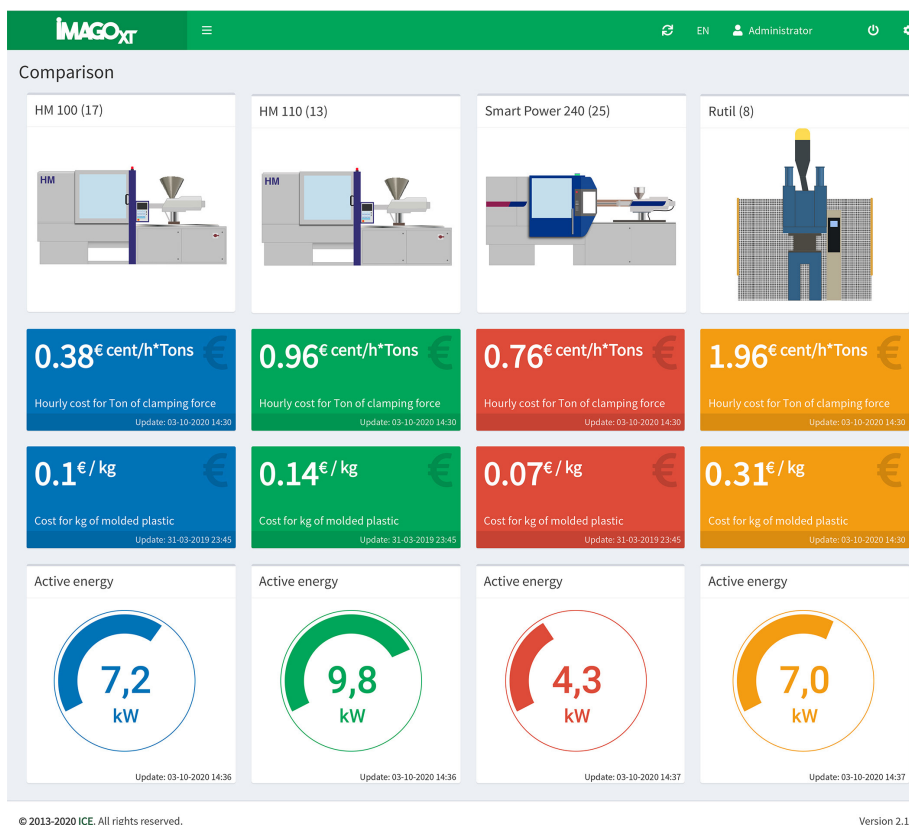
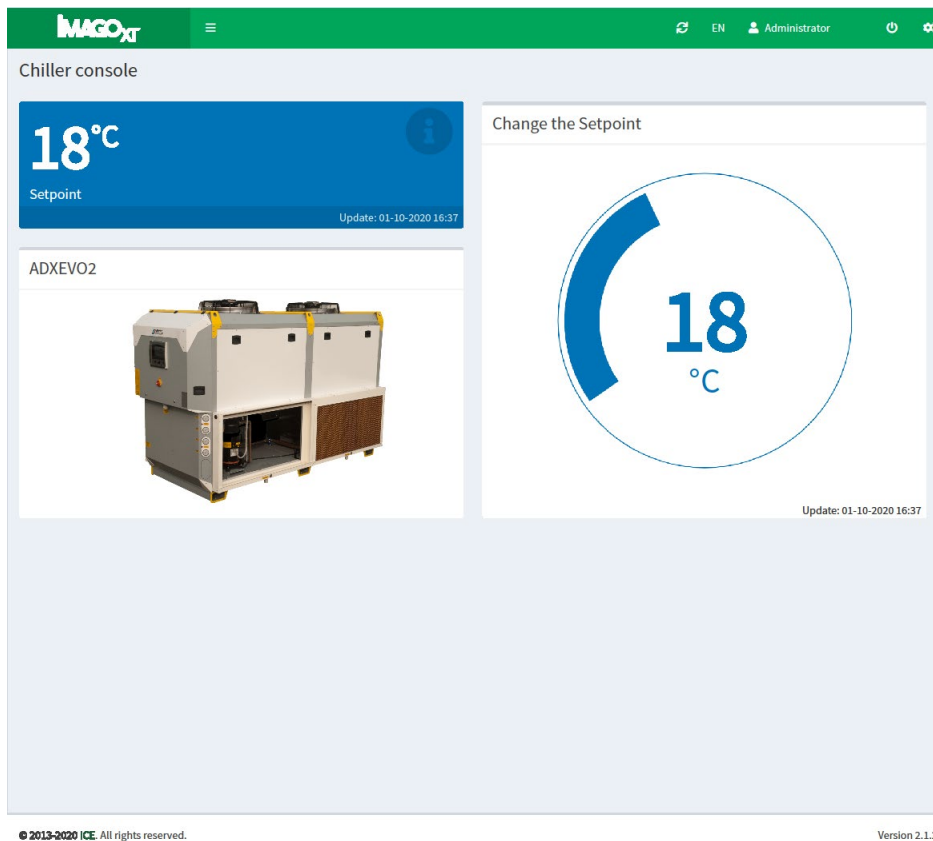


Fig. 2: Personalized Dashboard – Consumption details of machines



**Fig. 3:** Personalized Dashboard – Setpoints for auxiliaries

## The WITTMANN Group

The WITTMANN Group is a worldwide leader in the production of injection molding machines, robots and auxiliaries for the plastics processing industry, headquartered in Vienna/Austria and consisting of two main divisions: WITTMANN BATTENFELD and WITTMANN. They jointly operate the companies of the group with eight production plants in five countries, and its additional sales and service companies are active with 34 facilities on all important plastics markets around the world.

WITTMANN BATTENFELD pursues the further expansion of its market position as an injection molding machine manufacturer and specialist for state-of-the-art process technologies. As a supplier of comprehensive, modern machine technology in modular design, the company meets both present and future market demands for plastics injection molding equipment.

The WITTMANN product portfolio includes robots and automation systems, material handling systems, dryers, gravimetric and volumetric blenders, granulators, temperature controllers and chillers. With this diversified range of auxiliaries, WITTMANN offers plastics processors solutions to cover all production requirements, ranging from independent production cells to integrated plant-wide systems.

The syndication of the various segments under the umbrella of the WITTMANN Group has led to complete connectivity between the various product lines, for the benefit of plastics processors with an increasing demand for seamless integration of processing machinery with automation and auxiliaries.

**Contact:****WITTMANN BATTENFELD GmbH**

Wiener Neustädter Strasse 81

2542 Kottlingbrunn, Austria

Tel.: +43 2252 404-0

[info@wittmann-group.com](mailto:info@wittmann-group.com)

[www.wittmann-group.com](http://www.wittmann-group.com)